

Unicode™ 2 Series 16 Amp Switches

Components for Increased Safety Enclosures

NEC:
Class I, Division 2, Groups A, B, C, D
Class I, Zone 1, AEx de IIC

CEC:
Class I, Division 2, Groups A, B, C, D
Ex de IIC

ATEX/IECEX:
Zone 1 and 2 – 21 and 22
II 2 GD

CONTROLS: NEC/CEC, ATEX/IECEX INCREASED SAFETY CONTROL STATIONS

Appleton®

Features

- 2, 3, 4, 6 or 8-pole switches:
 - Available in TS35 rail mounted or panel mounted.
 - Padlockable
 - Can be equipped with switch and changeover switch contact blocks
- Switching capacity:
 - AC 1, 16 Amp, 690 Vac
 - AC 3, 8 Amp, 500 Vac
 - AC 3, 4 Amp, 690 Vac
 - AC 15, 16 Amp, 415 Vac
 - DC 1, 10 Amp, 24 Vdc
 - DC 1, 6 Amp, 60 Vdc
 - DC 1: 6 Amp/110 Vdc (2 contacts wired in series)
 - DC 1: 6 Amp/220 Vdc (3 contacts in series)
- Terminal connection: 1.5 mm² - 2.5 mm² (0.002 in² - 0.004 in²) (stranded), 1.5 mm² - 4 mm² (0.002 in² - 0.006 in²) (solid)
- Operational life: 10,000 cycles.

Standard Materials

- Body: polyamide
- Contact: silver

NEC/CEC Certifications and Compliances

- Switches: Certification Type SW16
 - Ambient Temperature: -55 °C to +80 °C (-67 °F to +176 °F)
 - CAN/CSA Standards: C22.2 No. 0-12, No. 14-10, No. 213-M1987, No. 60079-0, No. 60079-1, No. E60079-7,
 - UL Standards: UL 508, UL 60079-0, UL 60079-1, UL 60079-7
 - Other Standards: ANSI/ISA 12.12.01
 - CSA Certificate: 2644203

ATEX/IECEX Certifications and Compliances ①

- Certification Type SW16 (Switches)
 - Gas: Zone 1 and 2
 - Conforming to ATEX 94/9/CE: II 2 G
 - Type of Protection: Ex db eb IIC
 - Dust: Zone 21 and 22
 - Must be used in an approved dustproof enclosure
 - Operating Temperature: -55 °C to +80 °C (-67 °F to +176 °F)
 - CE Declaration of Conformity: 5C249
 - ATEX Certificate: LCIE 12 ATEX 3068U
 - IECEX Certificate: IECEX LCIE 12.0021U
- Certification Type AUXe (Handles) ②
 - Gas: Zone 1 and 2
 - Conforming to ATEX 94/9/CE: II 2 G
 - Type of Protection: Ex e II
 - Dust: Zone 21 and 22
 - Conforming to ATEX 94/9/CE: II 2 D
 - Type of Protection: Ex tD A21
 - Ambient Temperature: -20 °C to +55 °C (-4 °F to +131 °F)
 - CE Declaration of Conformity: 5C221
 - ATEX Certificate: LCIE 03 ATEX 0012U
- Index of Protection according EN/IEC 60529: IP66
- Impact Resistance (shock): IK10

EURASEC Certification

- Certification Type SW16 (Switches)
 - EURASEC RU C-FR.Г505.В00909



US30R
(rail mounted switch)



US30P
(panel mounted switch)



USH ②
(switch handle)

① These products are certified only when used as components in factory assembled panels.

② USH handle is ATEX certified it is not for use in IECEX explosive atmospheres.

Unicode™ 2 Series 16 Amp Switches Standard Configurations

Components for Increased Safety Enclosures

NEC:
Class I, Division 2, Groups A, B, C, D
Class I, Zone 1, AEx de IIC

CEC:
Class I, Division 2, Groups A, B, C, D
Ex de IIC

ATEX/IECEX:
Zone 1 and 2 – 21 and 22
II 2 GD

CONTROLS: NEC/CEC, ATEX/IECEX INCREASED SAFETY CONTROL STATIONS

Appleton®

	Diagram Number	Wiring Diagram	Catalog Number	
			Rail Mounted	Panel Mounted
Two Pole Selector Switches (handle to be ordered separately)				
2 position 2-pole selector switch	002		US1622-0002R	US1622-0002P
2 position 2-pole selector switch	016		US1622-0016R	US1622-0016P
3 position 2-pole selector switch	027		US1623-0027R	US1623-0027P
3 position 2-pole selector switch with spring return from 135° to 90°	038		US1623-0038R	US1623-0038P
3 position 2-pole selector switch with spring return from 45° to 90°	048		US1623-0048R	US1623-0048P
Three or Four Pole Selector Switches (handle to be ordered separately)				
2 position 4-pole selector switch	102		US1642-0102R	US1642-0102P
3 position 4-pole selector switch	119		US1643-0119R	US1643-0119P
2 position 4-pole selector switch	106		US1642-0106R	US1642-0106P
3 position 3-pole — Late break, early make selector switch with spring return from 45° to 90°	138		US1633-0138R	US1633-0138P
3 position 3-pole — Late break, early make selector switch with spring return from 135° to 90°	197		US1633-0197R	US1633-0197P
Padlockable lever handle for all selector switches			USH ①	

① USH handle is ATEX certified. it is not for use in IECEX explosive atmospheres.

Unicode™ 2 Series 16 Amp Switches

Components for Increased Safety Enclosures

NEC:
Class I, Division 2, Groups A, B, C, D
Class I, Zone 1, AEx de IIC

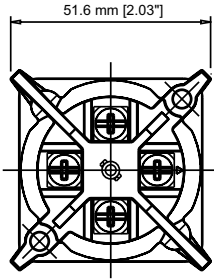
CEC:
Class I, Division 2, Groups A, B, C, D
Ex de IIC

ATEX/IECEx:
Zone 1 and 2 – 21 and 22
II 2 GD

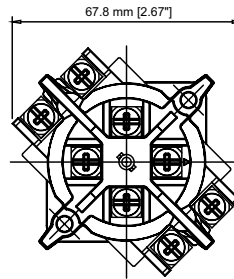
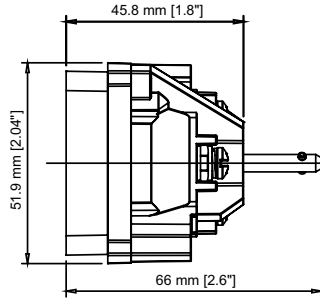
CONTROLS: NEC/CEC, ATEX/IECEx INCREASED SAFETY CONTROL STATIONS

Dimensions in Millimeters (Inches)

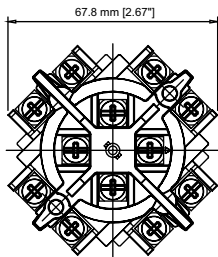
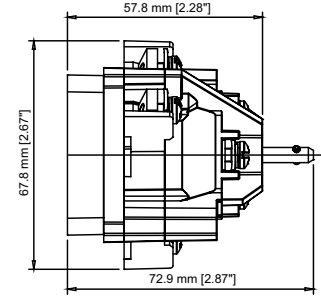
16 Amp Switches



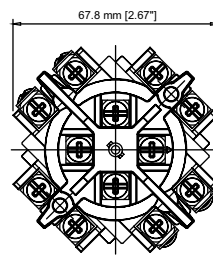
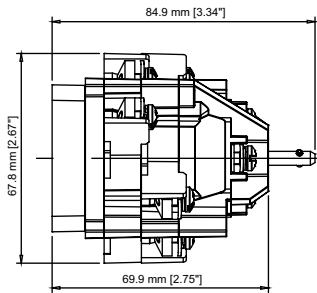
2-pole



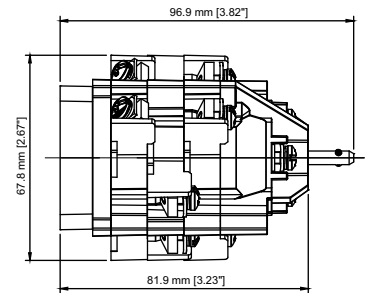
3- and 4-pole



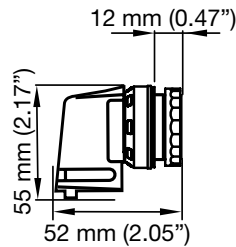
6-pole



8-pole



USH Handle ①



① USH handle is ATEX certified. it is not for use in IECEx explosive atmospheres.

Unicode™ 2 Series 16 Amp Switches Custom Configurations

Components for Increased Safety Enclosures

NEC:
Class I, Division 2, Groups A, B, C, D
Class I, Zone 1, AEx de IIC

CEC:
Class I, Division 2, Groups A, B, C, D
Ex de IIC

ATEX/IECEX:
Zone 1 and 2 – 21 and 22
Ex II 2 GD

CONTROLS - NEC/CEC, ATEX/IECEX INCREASED SAFETY CONTROL STATIONS



Wiring Diagram	Catalog Number		Wiring Diagram	Catalog Number	
	Rail Mounted	Panel Mounted		Rail Mounted	Panel Mounted
1-pole 2 position					
	US1612-0056R	US1612-0056P		US1612-0061R	US1612-0061P
2-pole 2 position					
	US1622-0003R	US1622-0003P		US1622-0015R	US1622-0015P
	US1622-0004R	US1622-0004P		US1622-0017R	US1622-0017P
	US1622-0005R	US1622-0005P		US1622-0018R	US1622-0018P
	US1622-0007R	US1622-0007P		US1622-0019R	US1622-0019P
	US1622-0008R	US1622-0008P		US1622-0020R	US1622-0020P
	US1622-0009R	US1622-0009P		US1622-0021R	US1622-0021P
	US1622-0010R	US1622-0010P		US1622-0043R	US1622-0043P
	US1622-0011R	US1622-0011P		US1622-0045R	US1622-0045P
	US1622-0012R	US1622-0012P		US1622-0053R	US1622-0053P
	US1622-0013R	US1622-0013P		US1622-0073R	US1622-0073P
	US1622-0014R	US1622-0014P		US1622-0074R	US1622-0074P
2-pole 3 position					
	US1623-0022R	US1623-0022P		US1623-0025R	US1623-0025P
	US1623-0023R	US1623-0023P		US1623-0026R	US1623-0026P
	US1623-0024R	US1623-0024P		US1623-0028R	US1623-0028P



Unicode™ 2 Series 16 Amp Switches Custom Configurations

Components for Increased Safety Enclosures

NEC:
Class I, Division 2, Groups A, B, C, D
Class I, Zone 1, AEx de IIC

CEC:
Class I, Division 2, Groups A, B, C, D
Ex de IIC

ATEX/IECEx:
Zone 1 and 2 – 21 and 22
Ex II 2 GD

CONTROLS: NEC/CEC, ATEX/IECEx INCREASED SAFETY CONTROL STATIONS



Wiring Diagram	Catalog Number		Wiring Diagram	Catalog Number	
	Rail Mounted	Panel Mounted		Rail Mounted	Panel Mounted
2-pole 3 position					
	US1623-0029R	US1623-0029P		US1623-0052R	US1623-0052P
	US1623-0030R	US1623-0030P		US1623-0054R	US1623-0054P
	US1623-0031R	US1623-0031P		US1623-0055R	US1623-0055P
	US1623-0032R	US1623-0032P		US1623-0059R	US1623-0059P
	US1623-0039R	US1623-0039P		US1623-0068R	US1623-0068P
	US1623-0040R	US1623-0040P		US1623-0070R	US1623-0070P
	US1623-0041R	US1623-0041P		US1623-0071R	US1623-0071P
	US1623-0042R	US1623-0042P		US1623-0072R	US1623-0072P
	US1623-0046R	US1623-0046P		US1623-0075R	US1623-0075P
	US1623-0047R	US1623-0047P		US1623-0076R	US1623-0076P
	US1623-0049R	US1623-0049P		US1623-0087R	US1623-0087P
	US1623-0050R	US1623-0050P		US1623-9002R	US1623-9002P
	US1623-0051R	US1623-0051P			

Unicode™ 2 Series 16 Amp Switches Custom Configurations

Components for Increased Safety Enclosures

NEC:
Class I, Division 2, Groups A, B, C, D
Class I, Zone 1, AEx de IIC

CEC:
Class I, Division 2, Groups A, B, C, D
Ex de IIC

ATEX/IECEX:
Zone 1 and 2 – 21 and 22
II 2 GD

Wiring Diagram	Catalog Number		Wiring Diagram	Catalog Number	
	Rail Mounted	Panel Mounted		Rail Mounted	Panel Mounted
2-pole 4 position					
	US1624-0044R	US1624-0044P		US1624-0062R	US1624-0062P
	US1624-0057R	US1624-0057P		US1624-0065R	US1624-0065P
	US1624-0058R	US1624-0058P		US1624-0084R	US1624-0084P
2-pole 8 position					
	US1628-0036R	US1628-0036P	—	—	—
3-pole 2 position					
	US1632-0122R	US1632-0122P		US1632-1153R	US1632-1153P
3-pole 3 position					
	US1633-0136R	US1633-0136P		US1633-1120R	US1633-1120P
	US1633-0144R	US1633-0144P		US1633-1142R	US1633-1142P
	US1633-0145R	US1633-0145P		US1633-1155R	US1633-1155P
	US1633-0161R	US1633-0161P		US1633-1171R	US1633-1171P
	US1633-0167R	US1633-0167P		US1633-1202R	US1633-1202P
	US1633-0199R	US1633-0199P		US1633-1209R	US1633-1209P
	US1633-1109R	US1633-1109P		US1633-1210R	US1633-1210P
	US1633-1112R	US1633-1112P			

CONTROLS: NEC/CEC, ATEX/IECEX INCREASED SAFETY CONTROL STATIONS



Unicode™ 2 Series 16 Amp Switches Custom Configurations

Components for Increased Safety Enclosures

NEC:
Class I, Division 2, Groups A, B, C, D
Class I, Zone 1, AEx de IIC

CEC:
Class I, Division 2, Groups A, B, C, D
Ex de IIC

ATEX/IECEx:
Zone 1 and 2 – 21 and 22
Ex II 2 GD

CONTROLS: NEC/CEC, ATEX/IECEx INCREASED SAFETY CONTROL STATIONS



Wiring Diagram	Catalog Number		Wiring Diagram	Catalog Number	
	Rail Mounted	Panel Mounted		Rail Mounted	Panel Mounted
3-pole 3 position					
	US1633-1230R	US1633-1230P	—	—	—
3-pole 4 position					
	US1634-0146R	US1634-0146P		US1634-0183R	US1634-0183P
	US1634-0168R	US1634-0168P		US1634-1119R	US1634-1119P
	US1634-0178R	US1634-0178P		US1634-1145R	US1634-1145P
	US1634-0181R	US1634-0181P		US1634-1151R	US1634-1151P
4-pole 2 position					
	US1642-0103R	US1642-0103P		US1642-0152R	US1642-0152P
	US1642-0104R	US1642-0104P		US1642-0154R	US1642-0154P
	US1642-0105R	US1642-0105P		US1642-0173R	US1642-0173P
	US1642-0107R	US1642-0107P		US1642-1105R	US1642-1105P
	US1642-0116R	US1642-0116P		US1642-1122R	US1642-1122P
	US1642-0134R	US1642-0134P		US1642-1147R	US1642-1147P
	US1642-0135R	US1642-0135P		US1642-1162R	US1642-1162P
	US1642-0137R	US1642-0137P		US1642-1234R	US1642-1234P
4-pole 3 position					
	US1643-0111R	US1643-0111P		US1643-0113R	US1643-0113P
	US1643-0112R	US1643-0112P		US1643-0114R	US1643-0114P

Unicode™ 2 Series 16 Amp Switches Custom Configurations

Components for Increased Safety Enclosures

NEC:
Class I, Division 2, Groups A, B, C, D
Class I, Zone 1, AEx de IIC

CEC:
Class I, Division 2, Groups A, B, C, D
Ex de IIC

ATEX/IECEX:
Zone 1 and 2 – 21 and 22
Ex II 2 GD

Wiring Diagram	Catalog Number		Wiring Diagram	Catalog Number	
	Rail Mounted	Panel Mounted		Rail Mounted	Panel Mounted
	US1643-0118R	US1643-0118P		US1643-0170R	US1643-0170P
	US1643-0120R	US1643-0120P		US1643-0175R	US1643-0175P
	US1643-0121R	US1643-0121P		US1643-0176R	US1643-0176P
	US1643-0127R	US1643-0127P		US1643-0180R	US1643-0180P
	US1643-0129R	US1643-0129P		US1643-1103R	US1643-1103P
	US1643-0131R	US1643-0131P		US1643-1104R	US1643-1104P
	US1643-0132R	US1643-0132P		US1643-1106R	US1643-1106P
	US1643-0133R	US1643-0133P		US1643-1108R	US1643-1108P
	US1643-0139R	US1643-0139P		US1643-1111R	US1643-1111P
	US1643-0140R	US1643-0140P		US1643-1113R	US1643-1113P
	US1643-0153R	US1643-0153P		US1643-1116R	US1643-1116P
	US1643-0157R	US1643-0157P		US1643-1125R	US1643-1125P
	US1643-0158R	US1643-0158P		US1643-1129R	US1643-1129P
	US1643-0159R	US1643-0159P		US1643-1134R	US1643-1134P
	US1643-0160R	US1643-0160P		US1643-1138R	US1643-1138P
	US1643-0162R	US1643-0162P		US1643-1159R	US1643-1159P
	US1643-0169R	US1643-0169P			

CONTROLS: NEC/CEC, ATEX/IECEX INCREASED SAFETY CONTROL STATIONS



Unicode™ 2 Series 16 Amp Switches Custom Configurations

Components for Increased Safety Enclosures

NEC:
Class I, Division 2, Groups A, B, C, D
Class I, Zone 1, AEx de IIC

CEC:
Class I, Division 2, Groups A, B, C, D
Ex de IIC

ATEX/IECEx:
Zone 1 and 2 – 21 and 22
II 2 GD

CONTROLS: NEC/CEC, ATEX/IECEx INCREASED SAFETY CONTROL STATIONS



Wiring Diagram	Catalog Number		Wiring Diagram	Catalog Number	
	Rail Mounted	Panel Mounted		Rail Mounted	Panel Mounted
4-pole 3 position					
	US1643-1165R	US1643-1165P		US1643-1206R	US1643-1206P
	US1643-1166R	US1643-1166P		US1643-1208R	US1643-1208P
	US1643-1167R	US1643-1167P		US1643-1213R	US1643-1213P
	US1643-1172R	US1643-1172P		US1643-1215R	US1643-1215P
	US1643-1173R	US1643-1173P		US1643-1217R	US1643-1217P
	US1643-1174R	US1643-1174P		US1643-1220R	US1643-1220P
	US1643-1176R	US1643-1176P		US1643-1222R	US1643-1222P
	US1643-1178R	US1643-1178P		US1643-1225R	US1643-1225P
	US1643-1179R	US1643-1179P		US1643-1226R	US1643-1226P
	US1643-1201R	US1643-1201P		US1643-1232R	US1643-1232P
	US1643-1203R	US1643-1203P		US1643-9001R	US1643-9001P
4-pole 4 position					
	US1644-0110R	US1644-0110P		US1644-0147R	US1644-0147P
	US1644-0123R	US1644-0123P		US1644-0148R	US1644-0148P
	US1644-0130R	US1644-0130P		US1644-0150R	US1644-0150P
	US1644-0143R	US1644-0143P		US1644-0151R	US1644-0151P

Unicode™ 2 Series 16 Amp Switches Custom Configurations

Components for Increased Safety Enclosures

NEC:
Class I, Division 2, Groups A, B, C, D
Class I, Zone 1, AEx de IIC

CEC:
Class I, Division 2, Groups A, B, C, D
Ex de IIC

ATEX/IECEX:
Zone 1 and 2 – 21 and 22
Ex II 2 GD

CONTROLS: NEC/CEC, ATEX/IECEX INCREASED SAFETY CONTROL STATIONS



Wiring Diagram	Catalog Number		Wiring Diagram	Catalog Number	
	Rail Mounted	Panel Mounted		Rail Mounted	Panel Mounted
4-pole 4 position					
	US1644-0155R	US1644-0155P		US1644-1128R	US1644-1128P
	US1644-0156R	US1644-0156P		US1644-1132R	US1644-1132P
	US1644-0164R	US1644-0164P		US1644-1133R	US1644-1133P
	US1644-0171R	US1644-0171P		US1644-1136R	US1644-1136P
	US1644-0198R	US1644-0198P		US1644-1139R	US1644-1139P
	US1644-0608R	US1644-0608P		US1644-1143R	US1644-1143P
	US1644-0611R	US1644-0611P		US1644-1144R	US1644-1144P
	US1644-0614R	US1644-0614P		US1644-1146R	US1644-1146P
	US1644-1102R	US1644-1102P		US1644-1154R	US1644-1154P
	US1644-1114R	US1644-1114P		US1644-1156R	US1644-1156P
	US1644-1115R	US1644-1115P		US1644-1163R	US1644-1163P
	US1644-1124R	US1644-1124P		US1644-1164R	US1644-1164P
	US1644-1127R	US1644-1127P		US1644-1168R	US1644-1168P

Unicode™ 2 Series 16 Amp Switches Custom Configurations

Components for Increased Safety Enclosures

NEC:
Class I, Division 2, Groups A, B, C, D
Class I, Zone 1, AEx de IIC

CEC:
Class I, Division 2, Groups A, B, C, D
Ex de IIC

ATEX/IECEX:
Zone 1 and 2 – 21 and 22
II 2 GD

CONTROLS: NEC/CEC, ATEX/IECEX INCREASED SAFETY CONTROL STATIONS

Wiring Diagram	Catalog Number		Wiring Diagram	Catalog Number	
	Rail Mounted	Panel Mounted		Rail Mounted	Panel Mounted
4-pole 4 position					
	US1644-1169R	US1644-1169P		US1644-1211R	US1644-1211P
	US1644-1180R	US1644-1180P		US1644-1212R	US1644-1212P
	US1644-1204R	US1644-1204P		US1644-1219R	US1644-1219P
	US1644-1205R	US1644-1205P		US1644-1224R	US1644-1224P
	US1644-1207R	US1644-1207P		US1644-1229R	US1644-1229P
4-pole 5 position					
	US1645-1110R	US1645-1110P		US1645-1235R	US1645-1235P

