

# DN20c

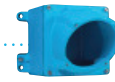
MULTI-CONTACT CONNECTORS METAL

MULTI

25 A IP55



## WALL MOUNTING SOCKET DN20c



Wall box metal 30°  
595C3M50



Socket-outlet  
1964191



## PLUG DN20c



Straight elastomer  
555POD35



Inlet  
1968191

## MAIN FEATURES

Rated current/contact (wiring according to standard)	25 A	Ambient temperature	-40 °C to +60 °C
Σ of currents (contacts)	≤ 350 A	Flexible wiring (min-max)	1-6 mm <sup>2</sup>
Maximum voltage	415 V	Stranded wiring (min-max)	1,5-10 mm <sup>2</sup>
IP protection lid closed	IP55	Wiring (terminals)	screw-type
IP protection plug connected	IP54	Keying positions	4
Shock resistance	IK09		



In case of Different voltage, think of MARECHAL® keying position coding

## SOCKET-OUTLET female DN20c (25 A)



## INLET male DN20c (25 A)



50 V AC	10P	1964100	1968100
50 V AC	11P	1964110	1968110
50 V AC	12P	1964120	1968120
50 V AC	13P	1964130	1968130
50 V AC	14P	1964140	1968140
50 V AC	15P	1964150	1968150
50 V AC	16P	1964160	1968160
50 V AC	17P	1964170	1968170
50 V AC	18P	1964180	1968180
50 V AC	19P	1964190	1968190
50 V AC	20P	1964200	1968200
415 V AC	9P+E	1964091	1968091
415 V AC	10P+E	1964101	1968101
415 V AC	11P+E	1964111	1968111
415 V AC	12P+E	1964121	1968121
415 V AC	13P+E	1964131	1968131
415 V AC	14P+E	1964141	1968141
415 V AC	15P+E	1964151	1968151
415 V AC	16P+E	1964161	1968161
415 V AC	17P+E	1964171	1968171
415 V AC	18P+E	1964181	1968181
415 V AC	19P+E	1964191	1968191



INFO+

## OPTIONS AND ACCESSORIES

Find the boxes, sleeves and handles at the end of the section page 94.